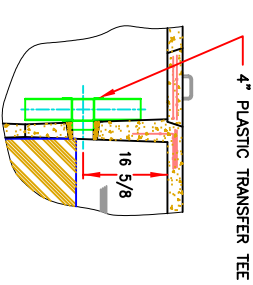
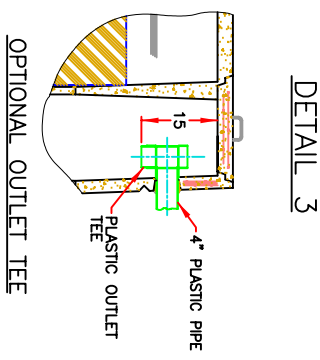


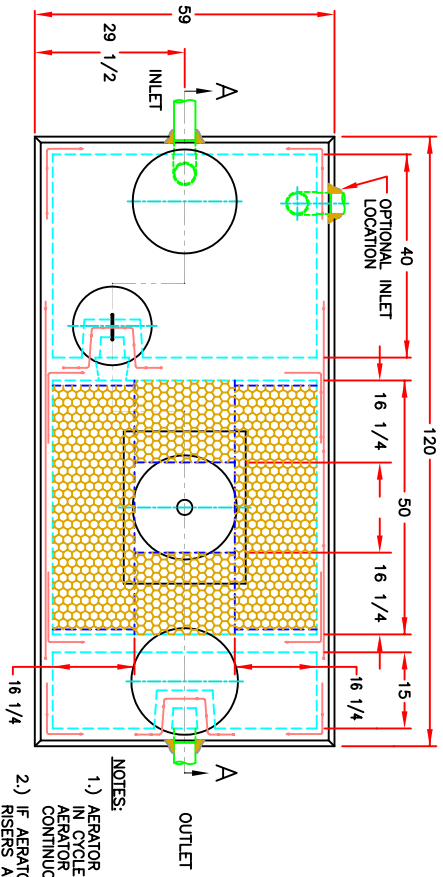
DETAIL 1
4" PLASTIC PIPE
OPTIONAL CAST-IN INLET TEE



DETAIL 2
4" PLASTIC TRANSFER TEE

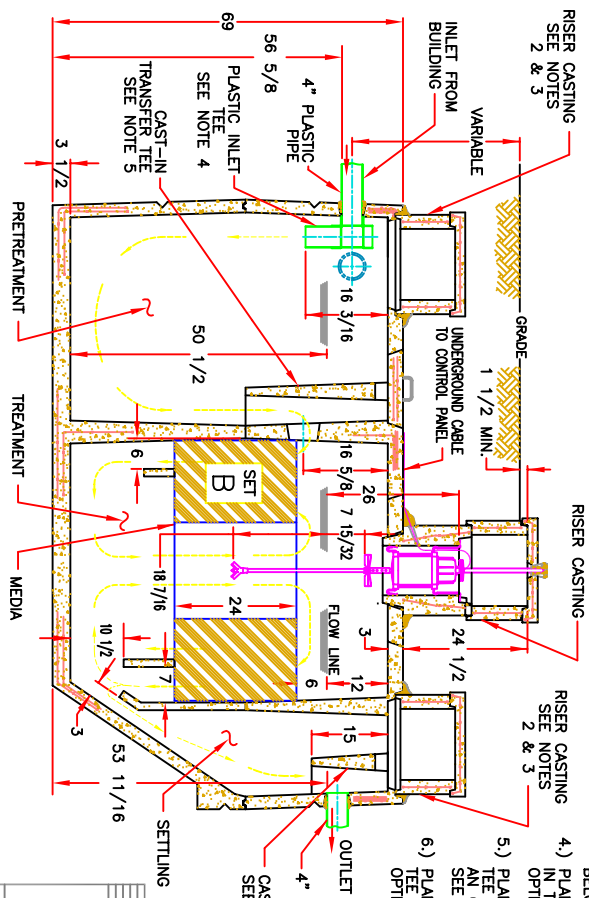


DETAIL 3
4" PLASTIC PIPE
PLASTIC OUTLET TEE



NOTES:

- 1.) AERATOR MODELS 565LL-S AND 665LL-FP IN CYCLED OR CONTINUOUS OPERATION OR AERATOR MODELS 560-S AND 660-FP IN CONTINUOUS OPERATION MUST BE USED.
- 2.) IF AERATOR MOUNTING CASTING HAS NO RISER, RISERS ARE NOT REQUIRED HERE. REMOVABLE CONCRETE COVERS ARE REQUIRED.
- 3.) IF AERATOR MOUNTING CASTING HAS A RISER(S), COVERED RISERS ARE REQUIRED HERE. RISERS SHOULD BE DEVELOPED TO GRADE OR TO 8'-12" BELOW GRADE.
- 4.) PLANTS WHICH DO NOT USE A PLASTIC INLET TEE IN THE PRETREATMENT COMPARTMENT MAY USE AN OPTIONAL CAST-IN INLET TEE. SEE DETAIL 1.
- 5.) PLANTS WHICH DO NOT HAVE A CAST-IN TRANSFER TEE IN THE PRETREATMENT COMPARTMENT MAY USE AN OPTIONAL PLASTIC TRANSFER TEE. SEE DETAIL 2.
- 6.) PLANTS WHICH DO NOT HAVE A CAST-IN OUTLET TEE IN THE SETTLING COMPARTMENT MAY USE AN OPTIONAL PLASTIC OUTLET TEE. SEE DETAIL 3.



SECTION A-A

PATENTED

		REVISED:	05-18-01e
		DRAWN BY:	R. P. T.
750 GPD PLANT COMPONENT PARTS & INSTALLATION QSMI JET INC.		APPROVED BY:	D.S.M.
		DATE:	3-15-94
DRAWING NUMBER: J-750		SCALE:	NONE
		PATENTED	